

# EMERGENCY EVACUATION ROYAL HALL OF INDUSTRIES

## EMERGENCY PROCEDURES



### On Hearing the ALERT TONE

#### Beep.. Beep.. Beep..

- Return to your normal work area, if safe, to do so, securing items as necessary and following work shut down procedures

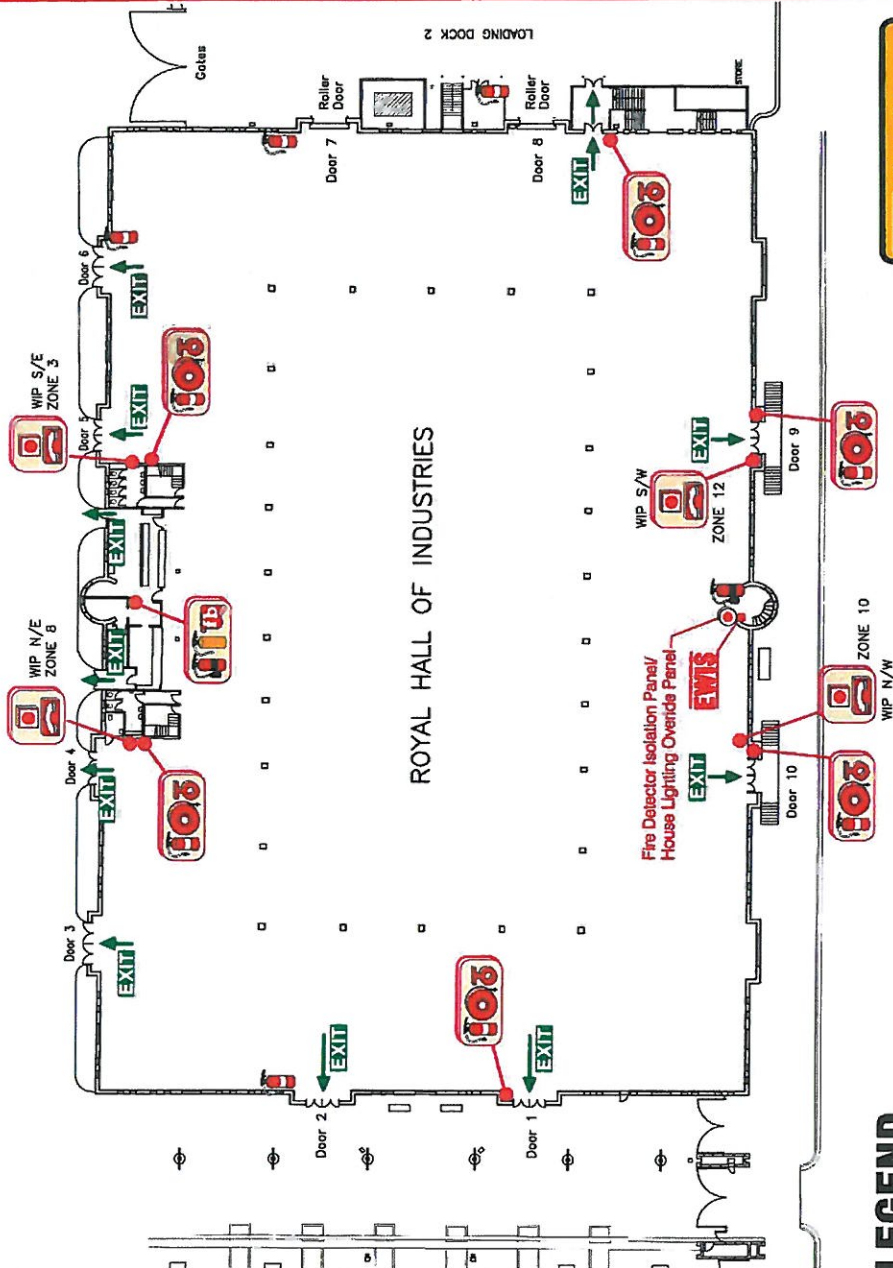
### On Hearing the EVACUATION TONE

#### Whoop.. Whoop.. Whoop..

- Follow the instructions of your Area Warden and/or evacuate the building via the nearest fire exit in a calm and orderly manner and proceed to your exterior Assembly Area
- Ensure other occupants in your area are aware of the evacuation and assist them if necessary
- Remain at the Assembly Area until advised by the responding authorities or the Chief Warden

### On Discovery of FIRE:

- Alert people in the immediate area
- Close doors and evacuate immediate danger area
- Ensure an alarm has been raised by calling the Fire Brigade on 999
- Notify your Warden of the location, nature and status of fire emergency
- Follow Warden instruction and evacuate if necessary



## LEGEND

- Fire Extinguisher
- Fire Hose Reel
- Break Glass Alarm
- Fire Blanket
- Fire Hydrant
- Warden Intercom
- Assembly Area
- Exit Route

For all emergency services dial 000

**Police**

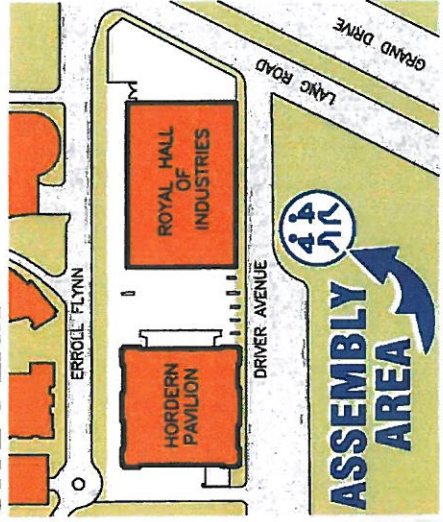
**Fire**

**Ambulance**



Fire Fighting  
Enterprises

## SITE PLAN



Revised: 17/11/2017, 10:00 AM, 10/11/2017, 10:00 AM, 10/11/2017, 10:00 AM



