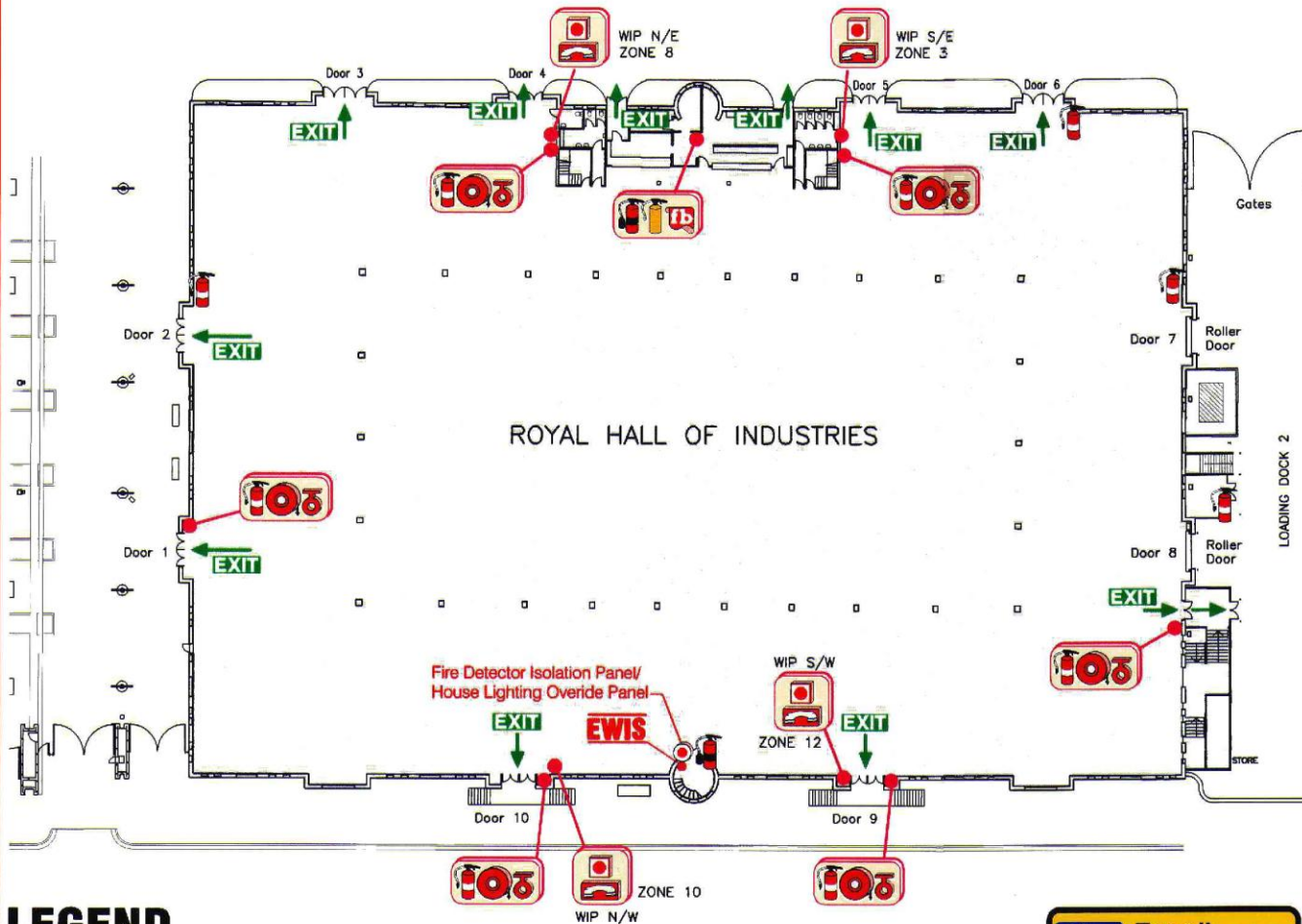


EMERGENCY EVACUATION

ROYAL HALL OF INDUSTRIES



LEGEND

- | | | | |
|--|-------------------|--|-----------------|
| | Fire Extinguisher | | Fire Hydrant |
| | Fire Hose Reel | | Warden Intercom |
| | Break Glass Alarm | | Assembly Area |
| | Fire Blanket | | Exit Route |



Fire Fighting Enterprises

For all emergency services dial 000

	Police
	Fire
	Ambulance

EMERGENCY PROCEDURES

On Hearing the ALERT TONE

Beep.. Beep.. Beep..

- Return to your normal work area, if safe to do so, securing items as necessary and following work shut down procedures

On Hearing the EVACUATION TONE

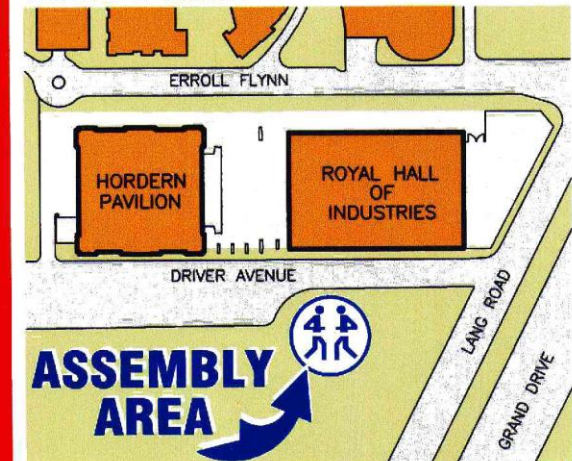
Whoop.. Whoop.. Whoop..

- Follow the instructions of your Area Warden and/or evacuate the building via the nearest fire exit in a calm and orderly manner and proceed to your exterior Assembly Area
- Ensure other occupants in your area are aware of the evacuation and assist them if necessary
- Remain at the Assembly Area until advised by the responding authorities or the Chief Warden

On Discovery of FIRE:

- Alert people in the immediate area.
- Close doors and evacuate immediate danger area.
- Ensure an alarm has been raised by calling the Fire Brigade on 000.
- Notify your Warden of the location, nature and status of fire emergency.
- Follow Warden instruction and evacuate, if necessary.

SITE PLAN



Plotted: F:\HORDERN PAVILION\EVAC-01.DWG Job:MOUL Wed 24 May 2006 3:05pm peters